



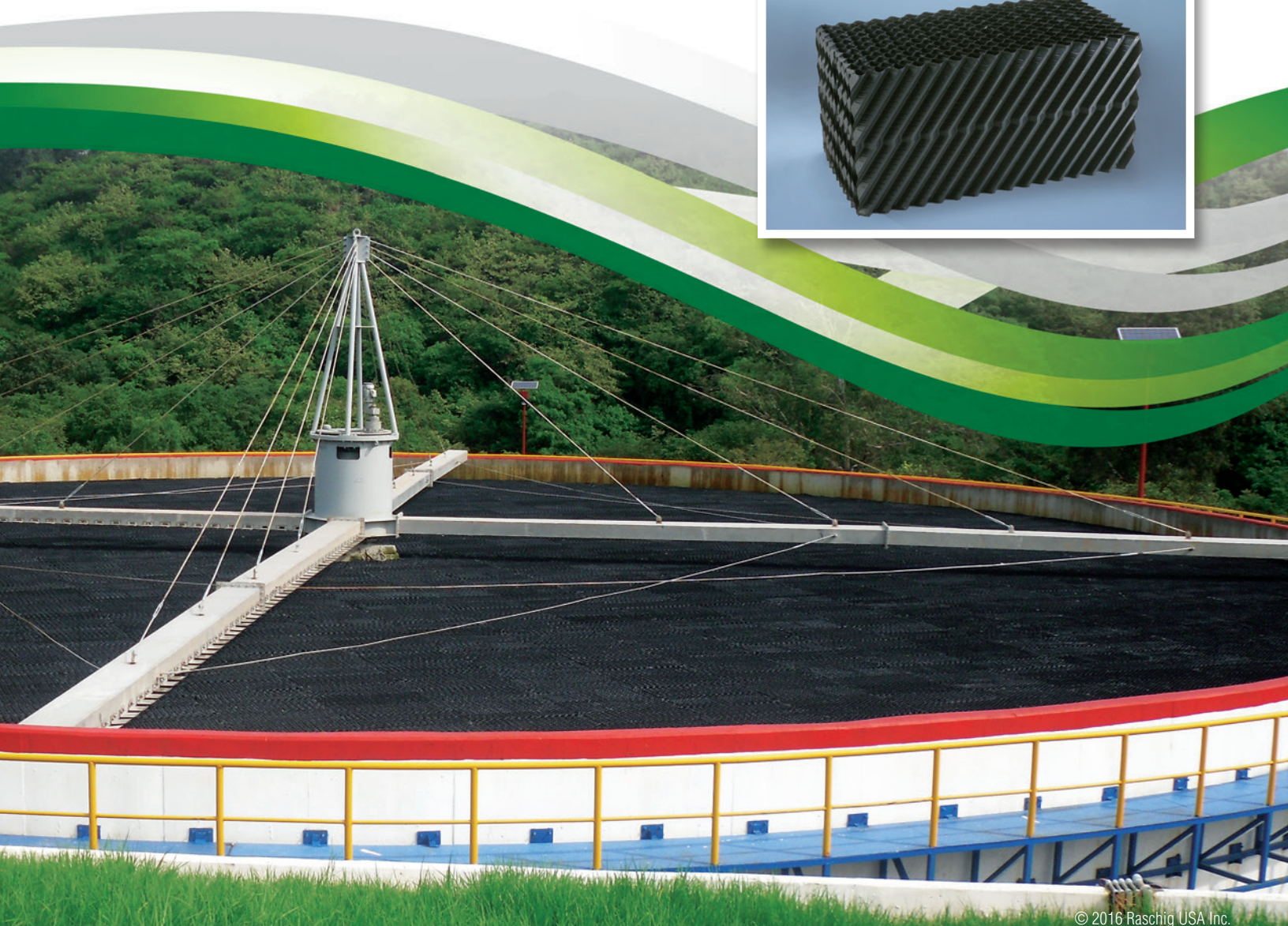
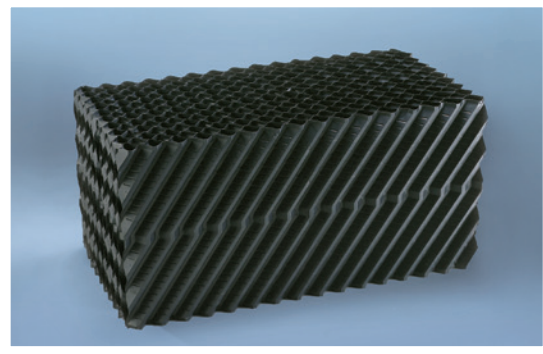
# DURA-PAC®

Cross Flow and Vertical Flow PVC Sheet Media for Trickling Filters, Submerged Fixed Bed, Tube Settlers and IFAS Processes

- ▶ Ideal for trickling filters, bio-towers, nitrifications towers, anaerobic or aerobic submerged bed treatment systems and oil/water separators
- ▶ Modules available in various sizes, designs, and specific surface areas
- ▶ Dura-Pier engineered support system and Dura-Dek protective grating available

We are **Raschig USA** and we supply media for biological treatment systems for industrial and municipal water and wastewater treatment facilities around the world.

**Call us today to discuss fixed film solutions for your project!**





## Fixed Film Technology for Wastewater Treatment

# DURA-PAC®

Cross Flow and Vertical Flow PVC Sheet Media  
for Trickling Filters, Submerged Fixed Bed,  
Tube Settlers and IFAS Processes

## The Dura-Pac Solution for Wastewater Treatment

Dura-Pac is a modular PVC corrugated media that is specifically designed for fixed film biological treatment applications. With a minimum void to volume ratio of 95%, Dura-Pac allows for uniform redistribution of wastewater and air while maximizing contact between the biomass and the wastewater.

Dura-Pac modules are composed of thermoformed PVC sheets that are UV protected and resistant to rot, fungi, bacteria, acids, and alkalines commonly found in wastewater. The PVC compound is non-toxic to microorganisms and specifically formulated to resist long-term creep and cracking under continuous loading.

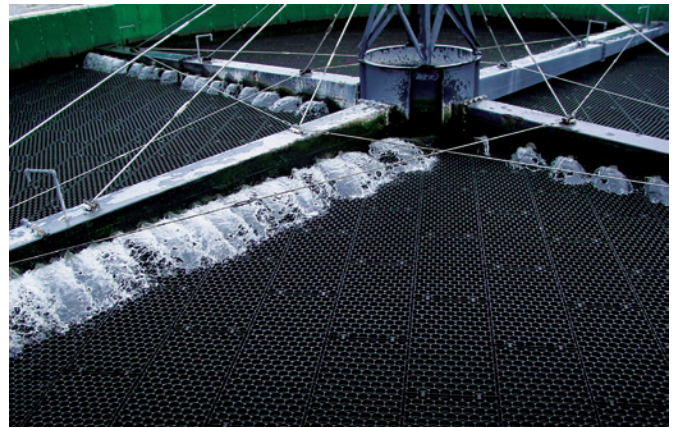
Available in cross flow (XF) and vertical flow (VF) designs, Dura-Pac includes a full range of modular PVC media geometries for wastewater treatment including complete secondary treatment, nitrification, denitrification, industrial roughing filters, submerged fixed beds and anaerobic treatment systems.

### Dura-Pac XF Cross Flow Module

The XF Series is recommended for low to medium BOD loading applications and is used for complete secondary treatment and nitrification of municipal wastewater. The 60° cross-corrugated pattern maximizes oxygen transfer and hydraulic retention time. The XF Series effective in reducing BOD and nitrification over a wide hydraulic range and various media depths.

### Dura-Pac VF Vertical Flow Module

The VF Series is recommended for high BOD loading applications. Dura-Pac VF is a clog resistant media designed for treating high strength industrial wastewater. The modules are formed by alternating flat and corrugated sheets and are effective in reducing possible biosolids buildup while still providing substantial BOD reduction.



*Dura-Dek top layer protective grating manufactured from UV resistant PVC*

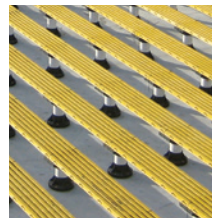
### PROTECTIVE SURFACE GRATING

## Dura-Dek for Dura-Pac Protection



Dura-Dek is a protective, skid resistant surface grating designed to shield the PVC modular media from UV radiation and the hydraulic impact of the rotary distributor.

The 2' x 4' interlocking panels provide a continuous and uniform walking surface across the entire top layer of the trickling filter media and can support over 1200 lbs/ft<sup>2</sup>.



### ENGINEERED SUPPORT SYSTEM

## Dura-Pier

- ▶ Pre-engineered support system for trickling filter media consisting of corrosion resistant, field adjustable components which include a two-piece leveling base, stanchion, cap and FRP grating
- ▶ Accommodates floor slopes up to 4% in 0.25% increments
- ▶ Pier heights of 8" to 60" (20 cm - 152 cm)



- ▶ Design allows maximum wastewater and air flow through plenum
- ▶ Cost effective solution compared to conventional concrete support systems

**Contact us today to review your project  
application and find out how we can  
be of service to you.**

**info@raschig-usa.com | Raschig-USA.com**